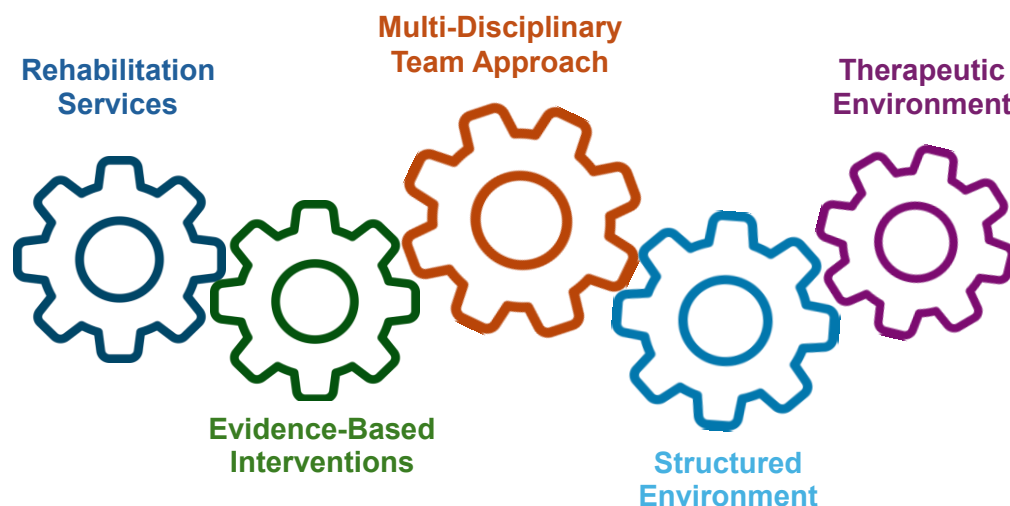


Grayson County Post-Adjudication Program

Providing Quality, Safe, and Effective Rehabilitation Services for Justice-Involved Youth

About Our Program

The Grayson County Post-Adjudication Program (The Grayson Post) is a secure, 61-bed residential facility dedicated to rehabilitating male juveniles ages 10 to 17. Located in Denison, Texas, The Grayson Post contracts with counties across the state, offering a structured and therapeutic environment focused on accountability, education, and emotional growth. Since its establishment in 1998, our program has provided evidence-based interventions designed to address criminogenic behaviors, improve decision-making, and equip youth with essential life skills. The facility operates with a multi-disciplinary team approach, ensuring a comprehensive treatment plan tailored to the individual needs of each resident.



Our Commitment to Safety & Quality

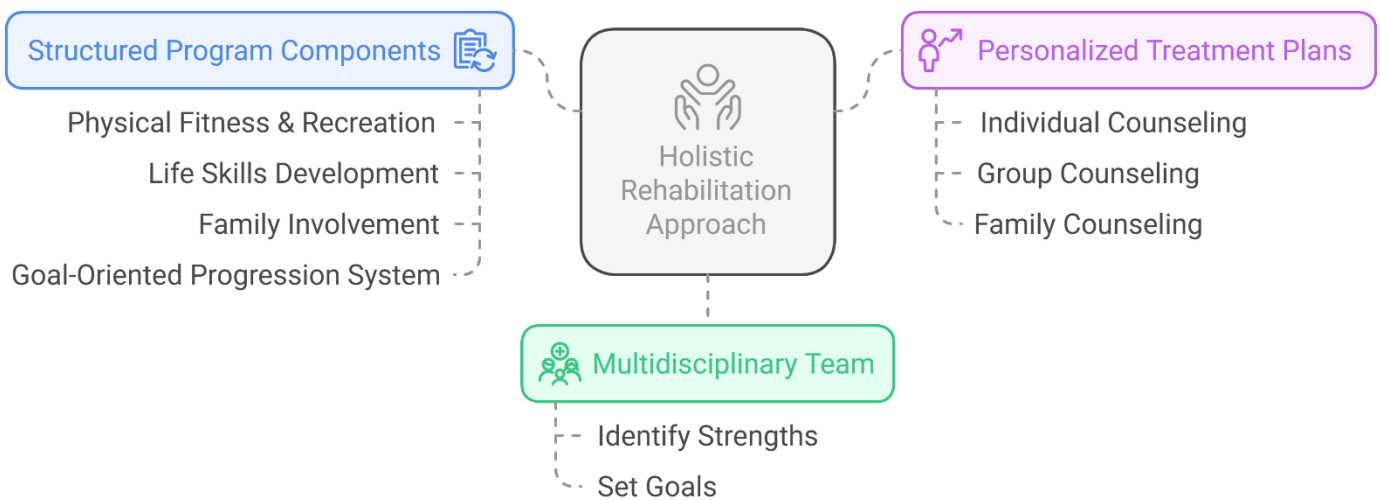
At The Grayson Post, we prioritize **safety, structure, and individualized care** to promote long-term rehabilitation. Our facility maintains:

- ✓ **A Low Staff-to-Resident Ratio** – Ensuring individualized supervision, support, and mentorship.
- ✓ **Highly Trained & Credentialed Staff** – Our professionals include licensed therapists, case managers, and certified juvenile supervision officers.
- ✓ **A Secure, Modern Facility** – Built with rehabilitation-focused architectural design, featuring open communal areas, natural lighting, and secure outdoor spaces to encourage emotional well-being.
- ✓ **Compliance with Best Practices** – We uphold Texas Juvenile Justice Department (TJJD) standards and Prison Rape Elimination Act (PREA) guidelines to ensure resident safety, accountability, and rights protection.
- ✓ **Continuous Improvement** – We are always enhancing our programming, facilities, and staff development to better serve our residents and contracting agencies.

Holistic Approach to Rehabilitation

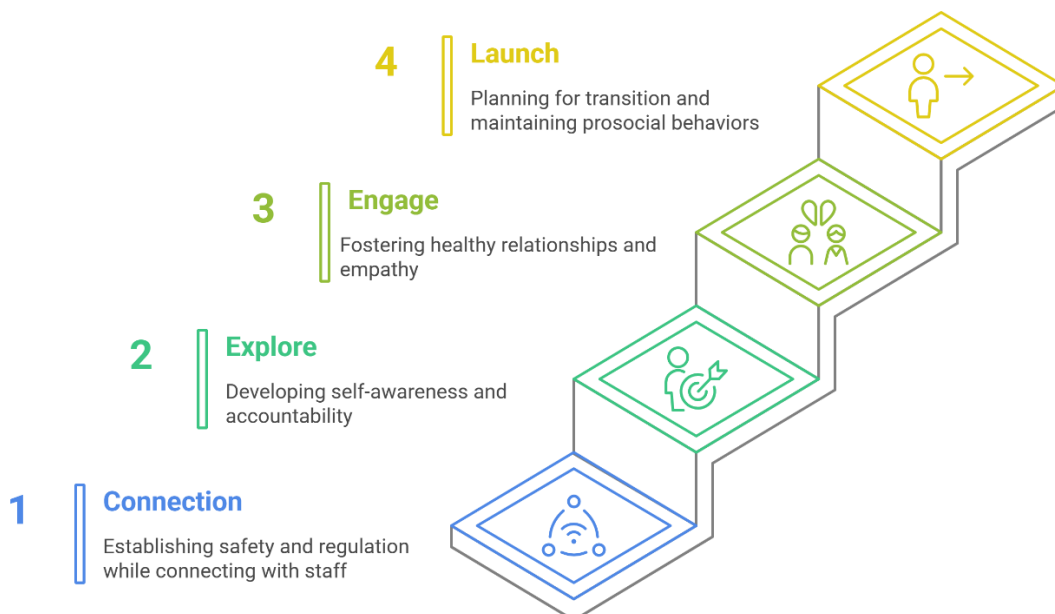
At the Grayson County Post-Adjudication Program, our treatment and rehabilitation services are designed to address the individual needs of each resident by providing a structured, supportive, and therapeutic environment. We recognize that behavioral challenges often stem from deeper underlying issues, and our approach focuses on accountability, personal growth, and skill development to promote long-term success.

Our multidisciplinary team works closely with each resident to identify strengths, challenges, and goals, creating a personalized treatment plan that incorporates individual, group, and family counseling, education, and life skills training. By emphasizing emotional regulation, decision-making, healthy relationships, and personal responsibility, we equip youth with the tools necessary to make positive choices, build resilience, and successfully reintegrate into their communities.



Goal-Oriented Progression System

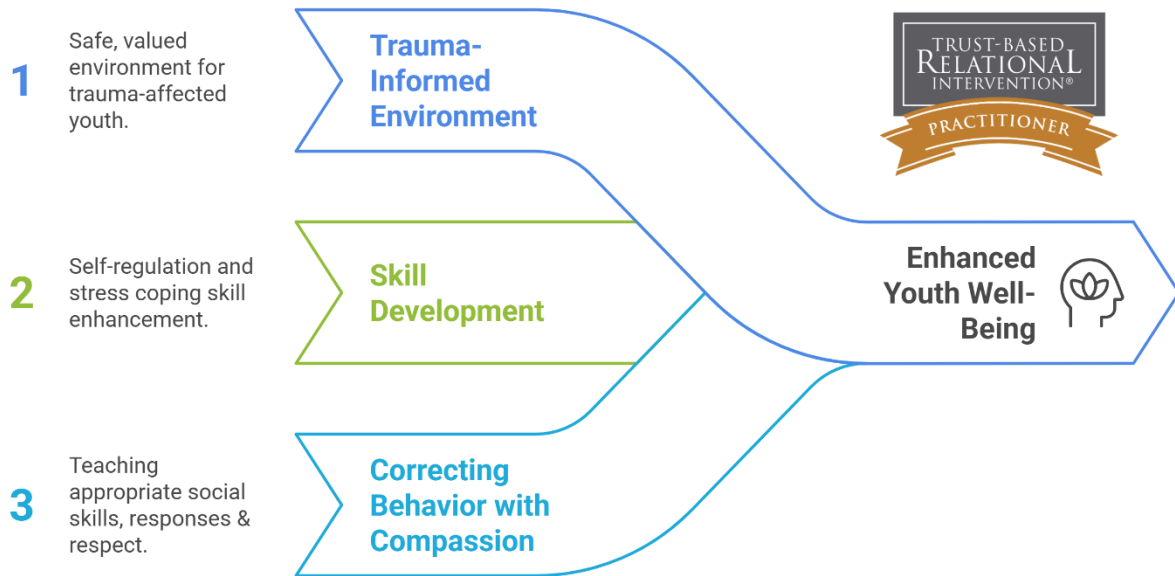
Residents progress through four structured phases that reinforce personal responsibility, emotional regulation, and decision-making. Each phase grants increasing privileges based on positive behavioral change, academic achievement, and engagement in treatment.



Trust Based Relational Intervention® (TBRI)

At Grayson County Department of Juvenile Services, we are dedicated to enhancing the well-being and rehabilitation of the youth in our care by integrating Trust-Based Relational Intervention® (TBRI®) principles into our programs. Developed by the Karyn Purvis Institute of Child Development (KPIDC) at Texas Christian University, TBRI® is an attachment-based, trauma-informed intervention tailored to address the complex needs of vulnerable children and adolescents. We currently strive to ensure approximately 20% of our staff are TBRI practitioners.

Our Objectives with TBRI® Implementation



Participation in the LeSA Project:

In collaboration with KPIDC, we are actively participating in the Leveraging Safe Adults (LeSA) Project. This initiative examines the effectiveness of TBRI® in preventing substance use among justice-involved youth as they transition from secure residential care back into the community. By embedding TBRI® principles into our framework and participating in the LeSA Project, we are committed to transforming our care practices.



Comprehensive Training

Our staff undergo training in TBRI® methodologies, equipping them with the skills to implement trauma-informed care effectively. This training ensures a consistent and informed approach across all interactions with our residents.

Upon completion of the LeSA Project, we receive specialized curricula designed to address the unique challenges faced by our youth. This curriculum is integrated into our existing programs, providing structured guidance and support to both staff and residents.

Curriculum Integration



Ongoing Support

We maintain a collaborative relationship with KPIDC, engaging in regular consultations and evaluations to assess the impact of TBRI® practices. This continuous feedback loop allows for the refinement of our approaches, ensuring they meet the evolving needs of our residents.

Educational Services

Education is a cornerstone of rehabilitation at The Grayson Post. We partner with Sherman Independent School District (SISD) to provide structured academic instruction within our facility. By emphasizing education, we aim to reduce recidivism, increase self-confidence, and equip youth with the tools necessary for a successful reintegration into their communities.

<https://www.shermanisd.net/>

Certified Teachers

Provide individualized and self-paced learning



Academic Calendar

Structured schedule from Monday to Friday



Special Education Services

Support students with learning disabilities



Innovation Through Collaboration

The Grayson County Department of Juvenile Services is partnering with LifeLab Studios to offer Journey.Do to the Grayson Post youth. Journey.Do is an innovative social growth platform developed by LifeLab Studios to facilitate personal development and positive change, particularly among justice-involved youth. By integrating evidence-based content, small group interactions, and personalized coaching, Journey.Do addresses criminogenic needs and fosters protective factors essential for successful reintegration into society.



journey.do

Together we thrive.

AI-Driven Insights

Real-time analytics and personalized feedback



Personalized Coaching

Guidance from trained growth specialists



Evidence-Based Content

Structured programs addressing criminogenic needs



Group Interactions

Small group journeys leveraging personal narratives

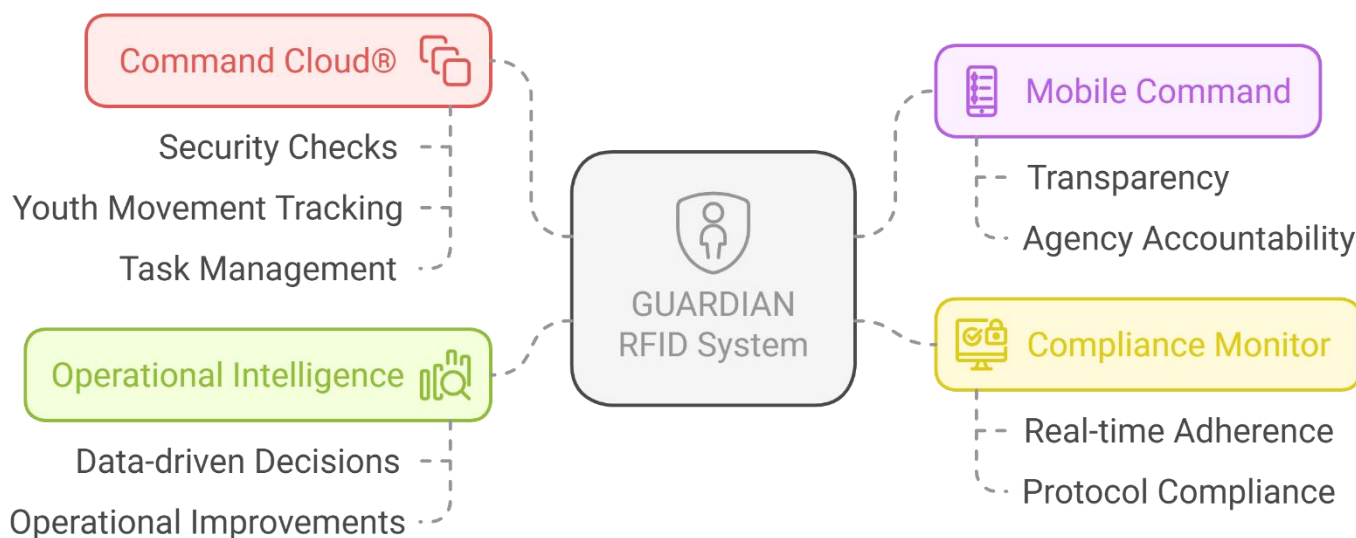


By focusing on the power of personal stories, relational connections, and applied learning, Journey.Do empowers individuals to achieve meaningful growth and contributes to the development of safer, more supportive communities.

<https://info.journey.do>

Guardian RFID

To assist the Grayson Post in ensuring youth safety, we have implemented GUARDIAN RFID, a comprehensive youth management system designed to enhance the safety, accountability, and operational efficiency of juvenile justice facilities. By integrating advanced technologies such as radio-frequency identification (RFID), mobile applications, and cloud computing, GUARDIAN RFID provides real-time tracking and management of youth activities, ensuring compliance and streamlining facility operations.



By adopting GUARDIAN RFID, our facility has enhanced our care, custody, and control requirements, leading to improved compliance and ability to safeguard residents in our care.

Using Music to Inspire Motivation and Educational Engagement

At the Grayson County Department of Juvenile Services, we continuously seek innovative ways to enhance educational engagement and personal growth for the youth in our care. As part of this effort, we recently collaborated with Southeastern Oklahoma State University in a research study exploring the impact of guitar lessons on adolescent motivation, literacy, and social identity.

This study, titled *From Detention to Expression: A Case Study on Fostering Adolescents' Artistic Liberation*, examined how participation in a structured guitar club influenced residents' motivation to engage in learning, social interactions, and self-expression.

Recognizing that traditional academic approaches may not always meet the diverse needs of justice-involved youth, this study investigated whether artistic engagement, particularly through music, could serve as a catalyst for increased motivation, emotional expression, and literacy development. The project focused on:

- 🎵 **Enhancing Motivation for Learning** – Exploring how music engagement fosters intrinsic motivation to improve literacy, communication, and academic interest.
- 🎵 **Social & Emotional Development** – Understanding how structured music programs help residents build confidence, resilience, and social connections.



Transforming Perspectives on Education – Evaluating how arts-integrated learning reshapes youth attitudes toward reading, writing, and structured learning.

Key Findings:

Enhancing Youth Development through Music



This study highlights the transformative power of music and the arts in rehabilitative and educational settings. By integrating structured artistic programs, we can further empower youth to develop motivation, emotional resilience, and critical life skills that support their long-term success.