

**WELLNESS BLOOD  
DRAWS**

Available with a prescription  
from your Primary Care  
Physician

Prices vary depending on  
tests required.

Service Available in the  
Sherman office

Monday, Tuesday,

Wednesday,

Friday

08:00 a.m.—11:00 a.m.

**BY APPOINTMENT ONLY**

**FOR INDIGENT  
PRIMARY  
HEALTHCARE NEEDS**

**Indigent Healthcare**

(co-located inside the Grayson County Health Clinic)

809 Gallagher Drive, Suite D  
Sherman, TX 75090  
Ph: 903-771-2851

Rev. 11/17



**Grayson County  
Health  
Department**



**Sherman Office**  
515 N Walnut St  
Sherman, TX 75090  
Ph: 903-893-0131  
Fx: 903-892-3776

**Denison Office**  
205 N Houston Ave  
Denison, TX 75021  
Ph: 903-465-2878  
Fx: 903-465-2978

**Amanda Ortez, R.S., M.B.A**  
Director

**Jerry Bennett, M.D.**  
Medical Authority



## **WELL WOMAN EXAMS**

Exams performed by a licensed  
Nurse Practitioner

Thursdays in the Sherman Office

**By appointment only**

Pricing begins at \$85

We gladly accept

Healthy Texas Women Program

### **Now Providing:**

Depo Provera  
birth control shot  
and the Nexplanon  
birth control implant  
through our Women's Clinic.

Please call for details  
and pricing.  
903-893-0131 ext. 1235

## **IMMUNIZATIONS\***

Age 0 through 18 years

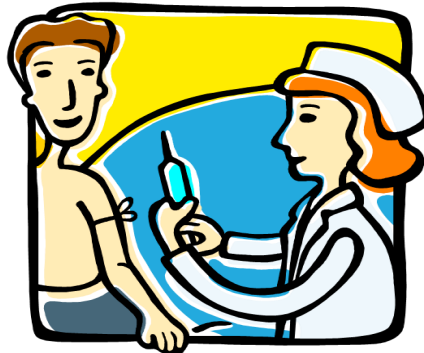
\$20 per child/per visit, or Medicaid

**\*We are unable to accept:  
CHIPS, or private insurance**

Service Available:  
Sherman Office  
Monday-Friday

**By Appointment Only**

Please call 903-893-0131 ext.  
1235 & 1237 for scheduling



## **PREGNANCY TESTS**

\$20

Service Available in the  
Sherman Office  
Monday, Tuesday, Wednesday,  
Friday  
By Appointment Only

## **SEXUALLY TRANSMITTED DISEASE TESTING**

Testing for Gonorrhea, Chlamydia,  
Syphilis, and HIV

\$30 and Treatment is included in  
price upon receipt of positive lab  
result for Gonorrhea, Chlamydia,  
and Syphilis

\$13 for HIV Test. Positive results  
are referred out of the office.

Service available in the  
Sherman Office  
Monday, Tuesday, Wednesday  
By Appointment Only