

**POTENTIALLY  
PREVENTABLE  
HOSPITALIZATION  
PROGRAM**

**Smoking Cessation**

**Education related to:**

**Diabetes**

**Dehydration**

**Urinary tract infections**

**COPD**

**Immunizations for**

**Those meeting**

**qualifications**

**including:**

**Influenza**

**Pneumonia**

**FOR PRIMARY  
HEALTH CARE  
NEEDS**

**Grayson County**

**Health Clinic**

**1111 Gallagher**

**Sherman, TX 75090**

**Ph: 903-771-2846**

**Indigent Health Program**

**1111 Gallagher**

**Sherman, TX 75090**

**Ph: 903-771-2851**

Rev. 1/17



**Grayson County  
Health  
Department**



**Sherman Office  
515 N Walnut St  
Sherman, TX 75090  
Ph: 903-893-0131  
Fx: 903-892-3776**

**Denison Office  
205 N Houston Ave  
Denison, TX 75021  
Ph: 903-465-2878  
Fx: 903-465-2978**

**Amanda Ortez, R.S., M.B.A  
Director**

**Jerry Bennett, M.D.  
Medical Authority**



## **WELL WOMAN EXAMS**

Exams performed by a licensed

Nurse Practitioner

Thursdays in the Sherman Office

By appointment only

Pricing begins at \$85

We gladly accept

Healthy Texas Women Program

## **WELLNESS BLOOD DRAWS**

Available with a prescription from

your Primary Care Physician

Prices vary depending on

tests required.

Service Available:

Sherman Office

Monday, Tuesday, Wednesday,

Friday

08:00 a.m.—11:00 a.m.

## **IMMUNIZATIONS\***

Age 0 through 18 years

\$20 per child/per visit, or Medicaid

\*We are unable to accept:

CHIPS, or private insurance

Service Available:

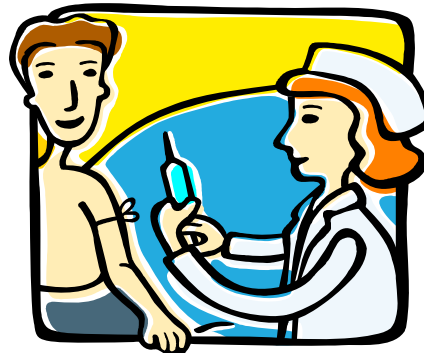
Denison Office

Tuesdays, 1:00 p.m.—4:30 p.m.

Sherman Office

Mondays & Wednesdays

1:00 p.m.—4:30 p.m.



## **PREGNANCY TESTS**

\$20

Service Available in the

Sherman Office

Monday, Tuesday, Wednesday,

Friday

08:00 a.m.—11:00 a.m.

1:00 p.m.—4:00 p.m.

## **SEXUALLY TRANSMITTED DISEASE TESTING**

GCHD tests for  
Gonorrhea, Chlamydia,  
Syphilis, and HIV

\$30—\$100 based on income  
Treatment is included in price upon  
receipt of positive lab result for  
Gonorrhea, Chlamydia, and  
Syphilis

Service available in the  
Sherman Office  
Monday, Tuesday, Wednesday  
08:00 a.m.—11:00 a.m.  
1:00 p.m.—4:00 p.m.